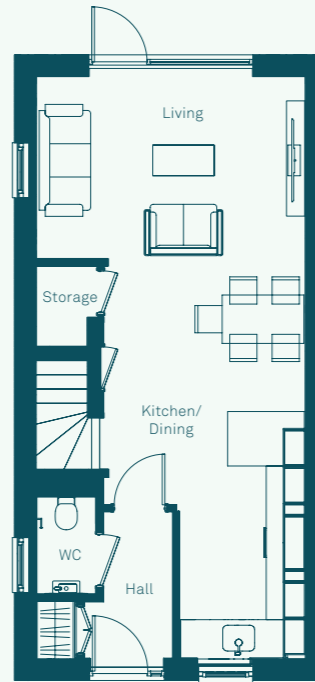


House Type E

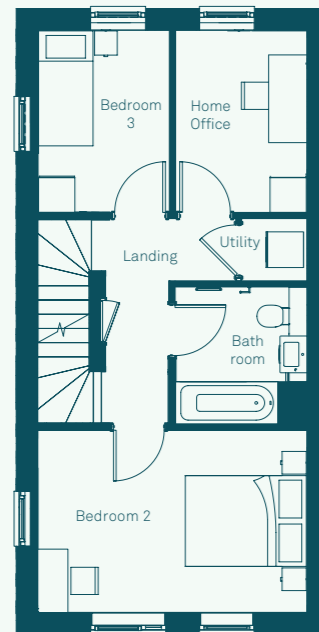
3 bedroom house
with home office
1,189 sqft / 110 sqm

BOXWOOD PARK

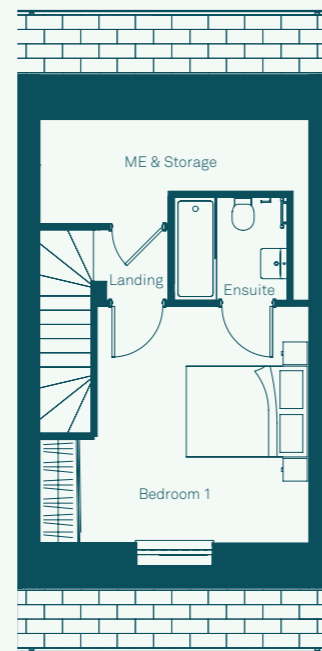
GROUND FLOOR



FIRST FLOOR



SECOND FLOOR



GROUND

Living	4.4m x 3.0m 14'5" x 9'10"
Kitchen/Dining	6.6m x 3.2m 21'8" x 10'6"
Hall	2.4m x 1.1m 7'11" x 3'7"
WC	1.6m x 1.0m 5'3" x 3'3"

FIRST

Bedroom 2	4.4m x 3.0m 14'5" x 9'10"
Bedroom 3	3.0m x 2.2m 9'10" x 7'3"
Home Office	3.0m x 2.2m 9'10" x 7'3"
Bathroom	2.2m x 2.2m 7'3" x 7'3"

SECOND

Bedroom 1	4.0m x 3.5m 13'2" x 11'6"
Ensuite	1.8m x 1.7m 5'11" x 5'7"

Computer generated image is indicative only.