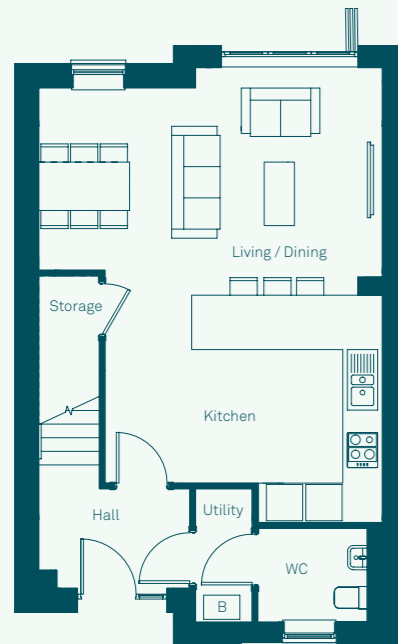


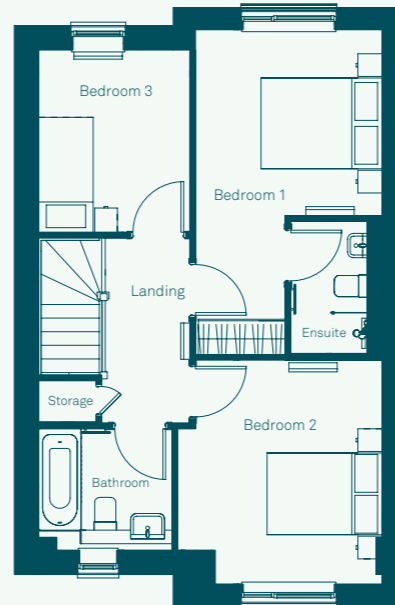
House Type D

3 bedroom house
1,050 sqft / 97.5 sqm

GROUND FLOOR



FIRST FLOOR



BOXWOOD PARK



House Type D

GROUND

Kitchen	4.6m x 3.5m 15'1" x 11'6"
Dining/Living	5.7m x 3.0m 18'8" x 9'10"
Utility/WC	3.1m x 1.5m 10'3" x 4'11"

FIRST

Bedroom 1	3.0m x 3.0m 9'10" x 9'10"
Ensuite	2.2m x 1.5m 7'3" x 4'11"
Bedroom 2	3.7m x 3.4m 12'2" x 11'2"
Bedroom 3	3.0m x 2.5m 9'10" x 8'2"
Bathroom	2.2m x 2.0m 7'3" x 6'7"

Computer generated image is indicative only.

© 2024 Boxwood Park. All rights reserved.